

**Chain saw files and accessories**



**vallorbe**  
+  
**SWISS**

**It's sharper  
It's smoother  
It stays longer  
It's the Swiss file  
made by Vallorbe,  
the precision file manufacturer**



# Five good reasons to sharpen your chain regularly with Vallorbe chain saw files



- To improve output -> allows you to cut more wood
- To increase comfort during work -> less vibration
- To increase safety -> lowers the risk of rebound
- To decrease fuel consumption
- To decrease wear on parts



Pictograms: see explanations page 15

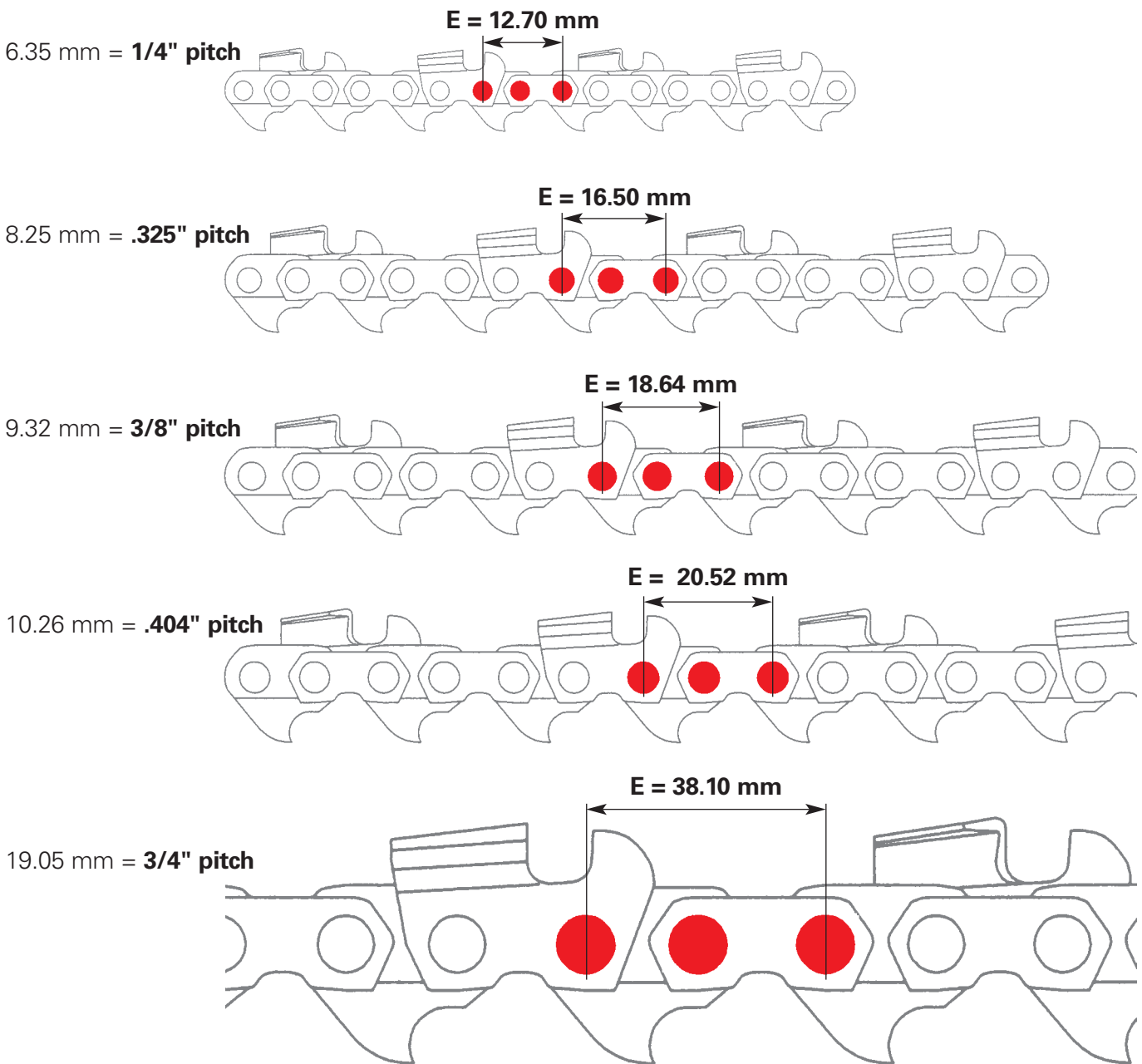
	Relation pitch of chain- Round chain saw files		<b>4</b>
	Round chain saw files		<b>6</b>
	Flat chain saw files		<b>7</b>
	Flat chain saw file		<b>8</b>
	Chisel bit file, Vallorbe shape		<b>8</b>
	Double Chisel bit file		<b>8</b>
	Chisel bit file, three square		<b>8</b>
	Files for bush cutters, mowers, axes, machetes, shovels...		<b>9</b>
	Handles		<b>10</b>
	Chain saw sharpening kit		<b>11</b>
	Saw bar dresser		<b>12</b>
	Packing units		<b>14</b>
	Applications and users		<b>15</b>



To identify a chain pitch, measure the distance between three rivets (axis to axis) and divide it by two

E mm	E "	E:2 = Pitch "	∅ corresponding file "	mm
12.70	.5"	<b>1/4"</b>	5/32"	4.0
16.50	.65"	<b>.325"</b>	11/64" - 3/16"	4.5 - 4.8
18.64	.75"	<b>3/8"</b>	13/64" - 7/32"	5.2 - 5.5
20.52	.808"	<b>.404"</b>	7/32"	5.5
38.10	1.5"	<b>3/4" (Harvester only)</b>	5/16"	7.9

## Scale 1:1





# Relation pitch of chain - Round chain saw files for the most current chains of the market



## Oregon

Type of chain	Pitch	Ø file
25AP	1/4"	5/32" - 4,0 mm
91VS, VG	3/8"	
33/34/35LG, L	.325"	11/64" - 4,5 mm
90SG	3/8"	
20/21/22BP, LP - M20/21/22LP - 95VP, R	.325"	3/16" - 4,8 mm
72/73/75DG, SG - 72DJ	3/8"	
72AP - 72/73/75DP, V, JG, LG, LP, RD - 72/73JP - M72/73/75LP	3/8"	13/64" - 5,2 mm (7/32" - 5,5 mm)
27 - 27A, R, RA - 50/51/52L - 58/59CP, LG - 59JG, AA <b>Harvester</b> 16/18H	.404"	7/32" - 5,5 mm
<b>Harvester</b> 11BC - 11H	3/4"	5/16" - 7,9 mm
72/75CJ, CJX, CK, CKX, CL, CLX	3/8"	"Chisel bit Double Chisel Bit Goofy File"
50/51/52AJ, AL - 52AK	.404"	"Chisel bit Double Chisel Bit Goofy File"

## Stihl

Type of chain	Pitch	Ø file
Rapid micro (RM)	1/4"	5/32" - 4,0 mm
Picco mini (PMN) - Picco micro (PM) - Picco micro1 (PM1)	3/8" P 3/8" P <sup>s</sup>	
Rapid micro (RM) - Rapid micro2 (RM2) - Rapid super (RS)	.325"	3/16" - 4,8 mm
Rapid micro (RM) - Rapid micro2 (RM2) - Rapid super (RS)	3/8"	13/64" - 5,2 mm
Rapid micro(RM) (RM2) - Rapid super (RS)	.404"	7/32" - 5,5 mm

## Husqvarna

Type of chain	Pitch	Ø file
S36/91VG	3/8" L	5/32" - 4,0 mm
90SG	3/8" L 1,1 mm"	11/64" - 4,5 mm
H25/21BP - H30/95VP	.325"	3/16" - 4,8 mm
H42/73LP - H49/73D	3/8"	13/64" - 5,2 mm
H64/27	.404"	7/32" - 5,5mm

## Dolmar

Type of chain	Pitch	Ø file
062	1/4"	5/32" - 4,0 mm
092	3/8"	
084	.325"	11/64" - 4,5 mm
290	3/8"	
086	.325"	3/16" - 4,8 mm
093 - 099	3/8"	13/64" - 5,2 mm
093 - 099	3/8"	7/32" - 5,5 mm
103	.404"	

## Carlton

Type of chain	Pitch	Ø file
N1C, N1C-GL, N4C, N4C-GL	3/8" LoPro	5/32" - 4,0 mm
K1L, K2L, K3L, K1L-BL, K2L-BL, K3L-BL	.325"	11/64" - 4,5 mm
K1C, K2C, K3C, K1C-BL, K2C-BL, K3C-BL, K1NK, K1NK-BL	.325"	3/16" - 4,8 mm
A1S, A2S, A3S, A1EP, A2EP, A3EP, A1EP-BL, A2EP-BL, A3EP-BL, A1EP-GL, A2EP-GL, A3EP-GL, A1EP-RP, A2EP-RP, A3EP-RP, A1LM, A2LM, A3LM, A1LM-BL, A2LM-BL, A3LM-BL, A1LM-GL, A2LM-GL, A3LM-GL	3/8"	7/32" - 5,5 mm
B2EP, B3EP, B2LM, B3LM, B3RM35, B3RM10, B2S, B3S	.404"	7/32" - 5,5 mm
<b>Harvester</b> B3H, B3H-RP, B3M, B5M	.404"	7/32" - 5,5 mm
<b>Harvester</b> G7S	.750"	5/16" - 7,9 mm

## Sarp

Type of chain	Pitch	Ø file
S25	1/4"	5/32" - 4,0 mm
SE3S, SE1S	3/8"	
SG30, SG3, SG5, SG6, SG3C, SG5C, SG6C	.325"	3/16" - 4,8 mm
SD3, SD5, SD6, SD3C, SD5C, SD6C	3/8"	7/32" - 5,5 mm
SF6	.404"	
<b>Harvester</b> SF6H, SF2H	.404"	



For other trade names refer to the above chart

## Chain saws

### Chain saw files



#### Round chain saw files, smooth (DX)



Ø in "	Ø in mm	L = " / mm	Box 12	Box 6	Box 4x3	Pouch 3
1/8	3.20	6 / 150	LC10000-03-18	LC10001-03-18	LC10003-03-18	LC10004-03-18
9/64	3.60	8 / 200	LC10000-03-964	LC10001-03-964	LC10003-03-964	LC10004-03-964
5/32	4.00	8 / 200	LC10000-03-532	LC10001-03-532	LC10003-03-532	LC10004-03-532
11/64	4.50	8 / 200	LC10000-03-45	LC10001-03-45	LC10003-03-45	LC10004-03-45
3/16	4.80	8 / 200	LC10000-03-316	LC10001-03-316	LC10003-03-316	LC10004-03-316
13/64	5.20	8 / 200	LC10000-03-1364	LC10001-03-1364	LC10003-03-1364	LC10004-03-1364
7/32	5.50	8 / 200	LC10000-03-732	LC10001-03-732	LC10003-03-732	LC10004-03-732
15/64	5.95	8 / 200	LC10000-03-1564	LC10001-03-1564	LC10003-03-1564	LC10004-03-1564
1/4	6.35	8 / 200	LC10000-03-14	LC10001-03-14		

#### Round chain saw files, 2nd cut (MDX)



Ø in "	Ø in mm	L = " / mm	Box 12	Box 6	Box 4x3	Pouch 3
5/32	4.00	8 / 200	LC10000-02-532	LC10001-02-532	LC10003-02-532	LC10004-02-532
3/16	4.80	8 / 200	LC10000-02-316	LC10001-02-316	LC10003-02-316	LC10004-02-316
13/64	5.20	8 / 200	LC10000-02-1364	LC10001-02-1364	LC10003-02-1364	LC10004-02-1364
7/32	5.50	8 / 200	LC10000-02-732	LC10001-02-732	LC10003-02-732	LC10004-02-732
15/64	5.95	8 / 200	LC10000-02-1564	LC10001-02-1564		
1/4	6.35	8 / 200	LC10000-02-14	LC10001-02-14		

#### Round chain Harvester file, 2nd cut



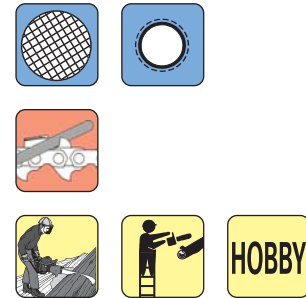
Ø in "	Ø in mm	L = " / mm	Box 6
5/16	7.90	8 / 200	LC10001-02-516



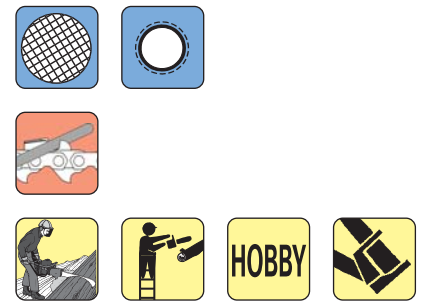
# Chain saws



Display 36	Display 60
LC10005-03-18	LC10006-03-18
LC10005-03-964	LC10006-03-964
LC10005-03-532	LC10006-03-532
LC10005-03-45	LC10006-03-45
LC10005-03-316	LC10006-03-316
LC10005-03-1364	LC10006-03-1364
LC10005-03-732	LC10006-03-732
LC10005-03-1564	LC10006-03-1564
	LC10006-03-14



Display 36	Display 60
LC10005-02-532	LC10006-02-532
LC10005-02-316	LC10006-02-316
LC10005-02-1364	LC10006-02-1364
LC10005-02-732	LC10006-02-732
	LC10006-02-14

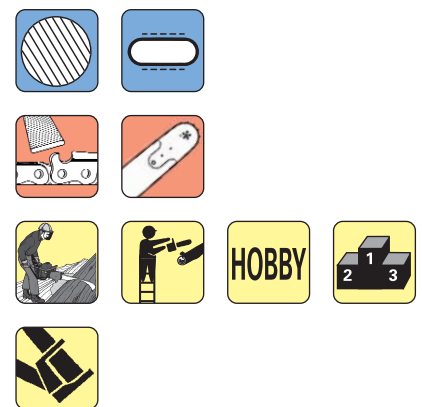


## Flat chain saw files, 2nd cut

Edges without cut. To lower the depth gauge adjustment



A x B	L = " / mm	Box 12
14.2 x 2.3	6 / 150	LC10020-2251-6
20.2 x 3.2	8 / 200	LC10020-2251-8



Types of cuts and shapes Applications Users

vallorbe  
swiss

Pictograms: see explanations page 15

## Chain saws

### Files for special sharpening

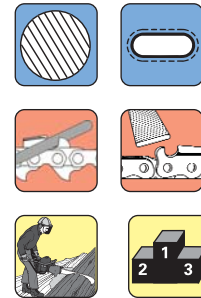


#### Flat chain saw file, 2nd cut (goofy file)

2 edges with cut. To lower the depth gauge adjustment



A x B	L = " / mm	Box 12
14.2 x 2.3	6 / 150	LC10020-2260-6

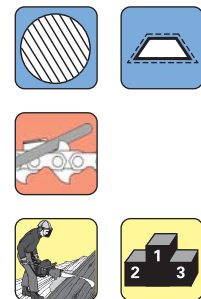


#### Chisel bit file, Vallorbe shape, 2nd cut

For full chisel cutter sharpening



A x B	L = " / mm	Box 12
12.0 x 2.3	7 / 175	LC10010-2270-7

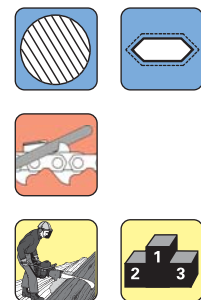


#### Double Chisel bit file, 2nd cut

For full chisel cutter sharpening



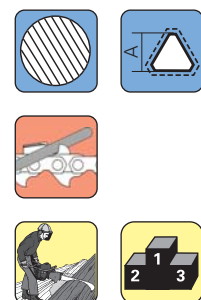
A x B	L = " / mm	Box 12
12.5 x 3.2	7 / 175	LC10010-2271-7



#### Chisel bit file, three square, 2nd cut



A	L = " / mm	Box 12
4.5	8 / 200	LC10010-2276-1





## Bush cutters

Files for bush cutters, mowers, axes, machetes, shovels...



### Round file, 2nd cut



Ø in "	Ø in mm	L = " / mm	Box 6
9/32	7.10	8 / 200	LC10001-02-932



### Flat files, 2nd cut



A x B	L = " / mm	Box 12
14.2 x 2.3	6 / 150	LC10020-2251-6
20.2 x 3.2	8 / 200	LC10020-2251-8



### Handy file - LX5530

1 side bastard, 1 side single cut. Edges without cut



Ref.	A x B	L = " / mm
LX5530-8	26.0 x 5.0	8 / 200
LX5530-10	30.6 x 5.6	10 / 250



Packing: 1 dozen in box

■ Types of cuts and shapes    
 ■ Applications    
 ■ Users

Pictograms: see explanations page 15

## Accessories

### Handles



#### Timber

Material: Polypropylene, blue. For round chain saw files.  
Allows an easy positioning 25° or 30°

Reference	L = mm	Typ - Length in "
AL240	120	○ all Ø from 5/32" to 1/4"



#### Woody

Material: heavy wood. For round chain saw files

Reference	L = mm	Typ - Length in "
AL340	100	○ all Ø, excepted 1/8" and 9/64"



#### Cobra

Material: Polypropylene, blue. Misfits with the round files

Reference	L = mm	Typ - Length in "
AL250	90	○ ○ 6"
AL251	110	△ ○
AL350	110	○ 8"



#### Crocodile

Material: Polypropylene, blue  
Adapted on all the files of our range Forest line  
The only handle on the market which can be screwed on the tail of the file

**The handle which enables you to pass from one file to the other with facility and speed**

Reference	L = mm	Typ - Length in "
AL110	94	○ only Ø 1/8" and 9/64"
AL210	94	△ ○ all Ø, excepted 9/32" and 5/16"
AL310	94	○ only 9/32" and 5/16" ○ ○ ○
AL410	105	△



## Accessories

### Chain saw sharpening kit



### The right tools for the right application

All the tools you need for the maintenance of the chain and guide bar are contained in a sturdy practical pouch:

- 1 file guide - guarantees regular, consistent sharpening
- 2 round files of the same diameter - provide smooth precise sharpening without burrs
- 1 flat file - to lower the depth gauges and debur the guide bar
- 1 handle - angled at 25 and 30° help you to maintain a constant cut angle on links
- 1 depth gauge guide - to lower all of the depth gauges to the same level (0.65 or 0.75 mm)
- 1 galvanized cleaning tool - for the removal of sawdust which can disrupt the lubrication of the chain



Tool pouch, available in 5 versions, containing:

1 file guide, 2 round files, 1 flat file, 1 handle 25/30°, 1 depth gauge, 1 bar groove cleaner

Ref.	Ø = "	Ø = mm	Chains
LC7073-5/32	5/32	4.0 mm	1/4" - 3/8" low
LC7073-4.5	11/64	4,5 mm	3/8" - .325"
LC7073-3/16	3/16	4.8 mm	.325"
LC7073-13/64	13/64	5.16 mm	3/8"
LC7073-7/32	7/32	5.5 mm	.404"



Demonstration CD or video available on request



Applications

Users

Pictograms: see explanations page 15

vallorbe  
swiss

## Accessories

### Saw bar dresser

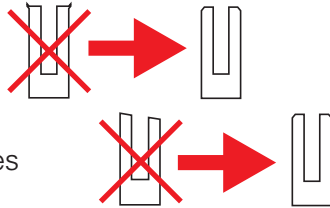


### Applications and benefits

The essential tool that allows you to easily and quickly maintain your chain saw's guide bar, better than grinding.

The two applications are:

- | Chamfering the edges of the guide bar
- | Redress the rails at 90° (same heights on both sides)



Benefits:

- | Better lubrication of the chain due to the excellent surface quality obtained by the file
- | Increased life-cycle of the guide bar (approximately 30%) and the chain
- | More precise cutting, straight
- | Increased safety

This maintenance should be performed once a week or at least, each time the chain is replaced.



You are advised to wear protective gloves to avoid injury.



### Applications graph

Filing procedure for common situations	Flat file coarse LO816-100-8	Flat file fine LO825-100-13N	Diamond plate DK001-100-200N	Chain saw flat file LC10020-2251-6/8 (voir page 8)
<b>A</b> Maintenance of guide bar showing normal wear (once a week)		<b>1</b>		
<b>B</b> Maintenance of guide bar each time the chain is changed	<b>1</b>	<b>(2)</b>		
<b>C</b> Maintenance of severely damaged guide bar (burned)	<b>2</b>	<b>3</b>	<b>1</b>	
<b>D</b> Freshening up the rails between two competition to be more precise and for a better lubrication		<b>1</b>		
<b>E</b> It's <b>IMPORTANT</b> to eliminate burrs before using files			<b>1</b>	
<b>F</b> Maintenance of a badly damaged guide bar	For your security, consult your dealer			
<b>G</b> To deburr the sides of the guide bar without refreshing the rails				<b>1</b>

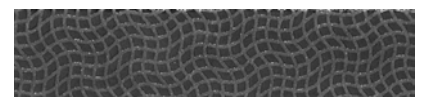
Common states of guide bars are listed from A to F  
The second part shows which type of file to be used in which sequence



Flat file gros



Flat file fine



Diamond plate



Flat chain saw file





## Accessories



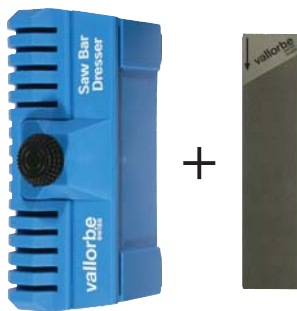
### Performance LC7081

1 support, 1 file LQ825-100-13N

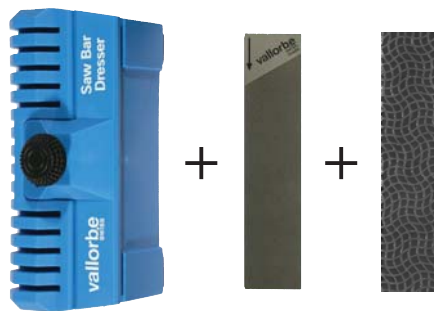
### Professional LC7082

1 support, 1 file LQ825-100-13N, 1 diamond plate DK001-100-200N

### Set Performance LC7081



### Set Professional LC7082



Ref.

Set Performance LC7081

Set Professional LC7082

Packing in plastic box with hole euro

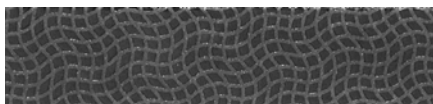
## Spare parts



LQ816-100-8



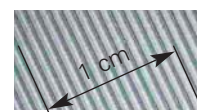
LQ825-100-13N



DK001-100-200N

	Ref.	L = mm	Cut
Flat file coarse	LQ816-100-8	100	Multifile
Flat file fine	LQ825-100-13N	100	Bastard (13 Z/cm)
Diamond plate	DK001-100-200N	100	Gros

Z/cm =



Packing in individual pouch with hole euro

Applications

Users

Pictograms: see explanations page 15

vallorbe  
swiss

# Packing



Box 12 round files



Box 6 round files



Box 4 x 3 round files



Pouch 3 round files



Display 36 round files



Display 60 round files



Box 12 flat files and Chisel bit

Packing	Smooth									2nd cut														
	1/8"	9/64"	5/32"	11/64"	3/16"	13/64"	7/32"	15/64"	1/4"	5/32"	3/16"	13/64"	7/32"	15/64"	1/4"	9/32"	5/16"	14.2 x 2.3 mm	20.2 x 3.2 mm	14.2 x 2.3 mm	4.5 mm	12.0 x 2.3 mm	12.5 x 3.2 mm	
Box 12	●	●	●	●	●	●	●	●	●	●	●	●	●	●	●			●	●	●	●	●	●	●
Box 6	●	●	●	●	●	●	●	●	●	●	●	●	●	●	●	●	●							
Box 4 x 3	●	●	●	●	●	●	●	●	●	●	●	●	●	●	●									
Pouch 3	●	●	●	●	●	●	●	●	●	●	●	●	●	●	●									
Display 36	●	●	●	●	●	●	●	●	●	●	●	●	●	●	●									
Display 60	●	●	●	●	●	●	●	●	●	●	●	●	●	●	●	●								

<b>Applications</b>										
Chain sharpening 	●	●	●	●	●	●	●	●		● Harvester
Depth gauge adjusting <i>To adjust after every 3-4 sharpenings</i> 			●	●	(●)			●		
Maintenance of saw bar 			●	(●)					●	
Sharpening of bush cutter discs 			●					●		●
Sharpening of: mower blades, axes, machetes, shovels... 			●					●		
<b>Users</b>										
Loggers, professionals 	●	●	●	●	●	●		●	●	●
Semi-professionals: farmer, gardener, firemen... 	●		●	(●)				●	●	●
Hobby, occasional users 	●		●					●	●	
Competition 		●	●	●	●	●				●
Harvester 	●		●		(●)	(●)				●



Single cut  
For sharpening work



Double cut  
For conventional work



Vallorbe -  
Professionals at your service...

forest  
line



...for the  
preservation  
of the forests

vallorbe  
SWISS

Your dealer

Usines Métallurgiques  
de Vallorbe SA  
Case postale 150  
CH-1337 Vallorbe  
Switzerland

Tel. +41 (0)21 843 94 94  
Fax +41 (0)21 843 94 00  
umv@vallorbe.com  
www.vallorbe.com